



First Report of *Dendrophthoe falcata* (I. F.) Ettingsh on Important Tree Species: *Populus deltoides* and *Melia dubia*

Anita Tomar ^{a*}, Satya Vrat Singh ^a and Sanjay Singh ^a

^a IcFRE- Ecorehabilitation Centre, Prayagraj (UP), India.

Authors' contributions

This work was carried out in collaboration among all authors. All authors read and approved the final manuscript.

Article Information

DOI: <https://doi.org/10.9734/ajahr/2024/v11i4349>

Open Peer Review History:

This journal follows the Advanced Open Peer Review policy. Identity of the Reviewers, Editor(s) and additional Reviewers, peer review comments, different versions of the manuscript, comments of the editors, etc are available here: <https://www.sdiarticle5.com/review-history/126655>

Received: 23/09/2024

Accepted: 27/11/2024

Published: 03/12/2024

Original Research Article

ABSTRACT

This study reports the first documented instance of *Dendrophthoe falcata* (L. f.) Ettingsh., a parasitic plant, infecting *Populus deltoides* and *Melia dubia*, two economically valuable timber and pulpwood tree species which have been extensively employed in agroforestry in India. Infected trees in both species exhibited a reduction in the size and growth of secondary branches, culminating in top drying and mortality due to gall formation on primary branches. The incidence of infection was higher in *Melia* (45 %) than in *Poplar* (20%). However, it was more severe in *Poplar*, with more than twice the number of gall formations compared to *Melia*, and a 10% tree mortality rate in the plantation. It seems that *M. dubia* is more resistant to *D. falcata* infestations compared to *P. deltoides*. Consequently, *D. falcata* emergence poses a severe threat to *Poplar* cultivars. Further research is essential to understand *Dendrophthoe*'s distribution, host specificity, and dispersal mechanisms to protect valuable species like *Poplar* and *Melia* from its detrimental effects.

*Corresponding author: Email: anitatomar@icfre.org;

Cite as: Tomar, Anita, Satya Vrat Singh, and Sanjay Singh. 2024. "First Report of *Dendrophthoe Falcata* (I. F.) Ettingsh on Important Tree Species: *Populus Deltoides* and *Melia Dubia*". *Asian Journal of Agricultural and Horticultural Research* 11 (4):142-47. <https://doi.org/10.9734/ajahr/2024/v11i4349>.

Keywords: Giant mistletoe; poplar; melia; timber; farmers.

1. INTRODUCTION

India is home to seven of the approximately 30 species of *Dendrophthoe*, with *Dendrophthoe falcata* (L.f.) Etting. var. *falcata* being one of them [1, 2]. A hemiparasitic plant belonging to the Loranthaceae family, *D. falcata* thrives on the shoots or stems of angiosperm plant hosts. Commonly known as "Loranth" or "Giant Mistletoe" in English and "Banda" in Hindi [3], this species has two main varieties: *D. falcata* var. *coccinea* (red flowers) and *D. falcata* var. *falcata* (greenish-white flowers). This is an evergreen, shrubby, partial parasite widespread in tropical and subtropical regions globally.

This genus is chiefly hemiparasitic shrub with opposite or subopposite and pinnately veined leaves, and axillary or terminal inflorescences with sessile spikes. The flowers are bisexual or unisexual (dioecious plants), 5- or 6-merous, actinomorphic. The inflorescence is an axillary or sometimes terminal raceme or spike. Calyx is usually persistent. The corolla, which can be greenish, yellowish, or white, has free petals that are small and shorter than 10 mm. Stamens are inserted on the petals. The ovary is 1-locular, the style lacks articulation, and the stigma is capitate. The fruit is an ovoid or subglobose berry. Each berry contains the embryo, the endosperm and a mucilaginous viscin, that consists of cellulose in a mixture of acidic and neutral polysaccharides [4-5]. The fruit is a berry, usually ovate [6]. Chromosome number has been reported as $2n=18$ [7]. The chromosome number has been reported as $2n=18$.

The plant species *D. falcata* are typically ornithophilous [2]. Seed dispersal also occurs through birds. The seeds, present in bird fecal matter, attach to branches with the help of a non-digestive gummy mucilage surrounding the seed. This mucilage aids in securing the seeds to the host branches, where they subsequently germinate in the bark.

D. falcata has been used in traditional medicine for its diverse therapeutic properties, including antimicrobial, antidiabetic, antioxidant, anticancer, antilithiatic, antihypertensive, and antiviral effects [8-9]. Among various species, *D. falcata* is extensively studied and utilized to treat a wide range of conditions such as skin disorders, pulmonary tuberculosis, psychic disorders, asthma, paralysis, ulcers, menstrual

disorders, and wounds. It is also consumed as a health food to enhance immunity and is used as a pain reliever, aphrodisiac, narcotic, and diuretic [10-12].

As a partial parasite, *D. falcata* cannot thrive in soil without a host. Notably, this species is considered a potential pest due to the significant damage it inflicts on various economically valuable plants. By forming connections with its host, the parasite obtains water and mineral nutrients. Specifically, *D. falcata* is a common phanerogamic plant parasite, frequently targeting fruit and forest trees. Seeds of *D. falcata* germinate primarily forming a massive haustorium. However, successful establishment is depends upon the haustorium penetrating the host tissue, determining its ultimate fate [13].

D. falcata attacks a diverse array of tree species, including medicinal, ornamental, horticultural, and economically valuable forest trees [14]. It exhibits a broad host range, with widespread distribution across various geographical locations in the country [15]. Notably, as many as 343 host species have been reported in India alone. Previous studies have documented significant host ranges in specific regions, including 98 hosts in Karnataka, India [15], 55 hosts at Jahangirnagar University campus, Savar, Bangladesh, and 50 hosts in Rajshahi city, Bangladesh [16]. In the central region of India, *D. falcata* is frequently observed on *Madhuca latifolia* L. Despite its broad host range, it exhibits a striking specificity, exclusively targeting dicotyledonous plants. Monocots are conspicuously absent from the recorded host list, while only one gymnosperm host, *Pinus longifolia* Roxb., has been reported [17].

One of the characteristic features is its non-specificity in the selection of host plants [17-20]. It readily infects a wide variety of common trees throughout India, including neem (*Azadirachta indica*), mango (*Mangifera indica*), guava (*Psidium guajava*), sugar apple (*Annona squamosa*), and others. *D. falcata* predominantly infects mango trees, with a staggering 60-90% infection rate observed in northern India. A study at Banaras Hindu University (BHU) main campus found mango trees to be the most preferred host of *D. falcata* [21]. However, it has been reported to have increased its host range and found growing on varieties of trees [2]. It rarely associates with tropical timbers trees barring

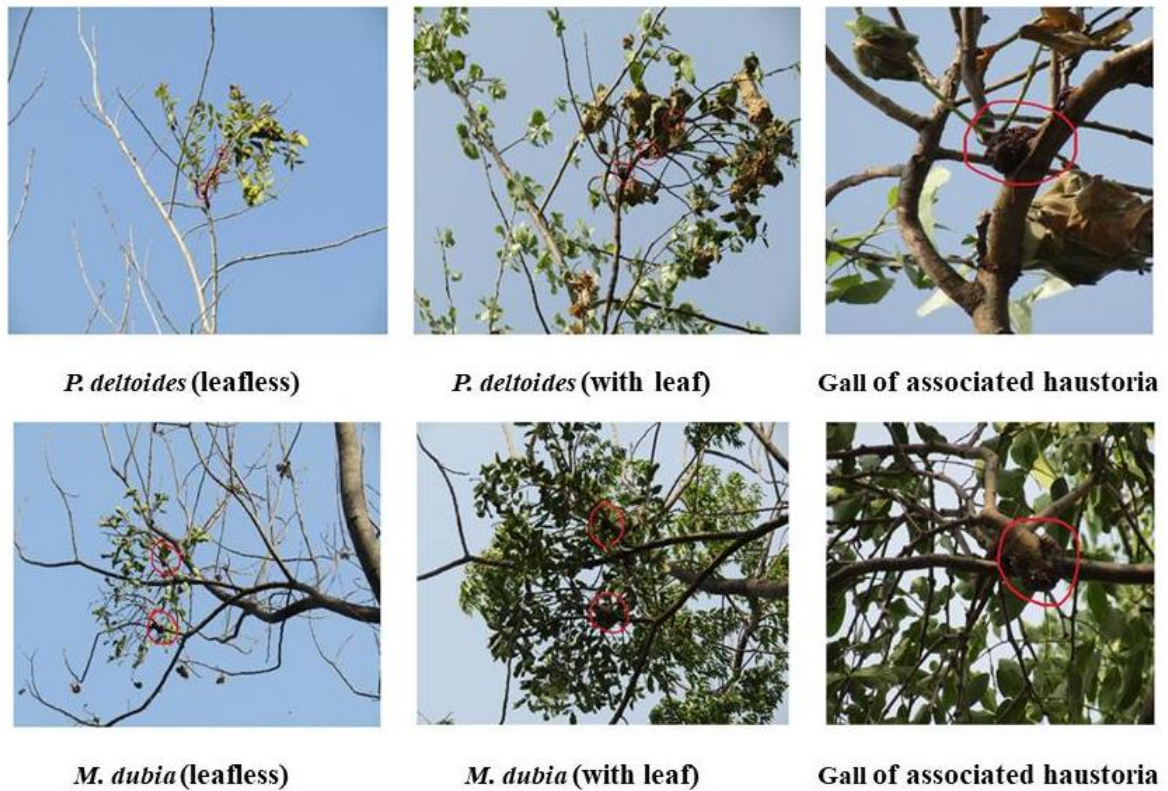


Fig. 1. Infected poplar and melia trees

Bombax ceiba, *Bauhinia purpurea*, *Cassia fistula*, *Casuarina equisetifolia*, *Eucalyptus globules* and *Pterospermum acerifolium*. Therefore, the present report of its incidence on *Populus deltoides* and *Melia dubia*, two economically valuable agroforestry tree species highlight the need for immediate attention and management.

2. MATERIALS AND METHODS

An investigation on the growth and health of agroforestry demonstration plantations was conducted at Prayagraj, Uttar Pradesh, India (25°32'42.3"N, 81°53'28.3"E, elevation 86.7 m above mean sea level). The plantations featured *Populus deltoides*, *Melia dubia*, *Eucalyptus tereticornis*, *Gmelina arborea* and *Tectona grandis*. The age of these plantations ranged from 6-9 years.

Any infestation of insects and pests in individual trees was carefully recorded through visual inspection in three plantations of all species. Infested samples were collected during January and May 2024 and subsequently identified. The % of infected and decayed/died tree was

recorded along with average number of galls formed per infected tree of different species.

3. RESULTS AND DISCUSSION

Among the plantations of the five species, *D. falcata* infestations were detected in only two instances: one plantation of *Populus deltoides* (year of establishment 2018) and one plantation of *Melia dubia* (year of establishment 2016) (Fig. 2). The details of infestations have been provided in Table 1. The incidence of infection was found to be higher in Melia than Poplar. However, it was more severe in Poplar with more number of gall formation (> than 2 times of that in Melia) and death of 10% trees in the plantation. It seems that *M. dubia* is more resistant to *D. falcata* infestations compared to *P. deltoides*.

It is notable that these tree species have not been reported previously as host for *D. falcata*. Poplar and Melia trees are extensively cultivated in Punjab, Haryana, Uttar Pradesh, and several other states, particularly under agroforestry systems for their fast growth ensuring high economic returns to the farmers in a short

rotation. Therefore, the present finding expands the known host range of *D. falcata*, underscoring the need for revised management strategies to mitigate potential adverse impacts on productivity of these valuable cash crops.

Although the selection of host plants is entirely at random, experimental evidence indicates that this parasite has its own spectrum of hosts controlled by some factors one of which seems to be osmotic pressure relationships between the host and the parasite. *D. falcata* predominantly grows on the top of the host canopy to conduct photosynthesis [22]. The parasite is easily spotted on the branches of host trees as a dense cluster of small twigs bearing smooth, broad leaves and long, tubular, orange-colored flowers with red berries [23-24]. *D. falcata* causes reduced vigor, growth rates, poor fruit yield, and top drying in its hosts, predisposing them to insect infestations and other diseases, ultimately resulting in the death of the host trees [12]. The parasite significantly impedes growth of the host trees [25-26] and its infestation has been shown to be lethal [27]. A similar pattern was observed in Poplar and Melia trees under the present study. Infected Poplar and Melia trees exhibited a reduction in size, number of leaves, and growth of secondary

branches, eventually leading to top drying and the death of the tree. Unlike healthy Poplar trees, which typically shed leaves from November to February, the infected tree exhibited stunted growth compared to other Poplar and Melia trees.

These parasites establish a harmful relationship with the host's vascular system siphoning essential nutrients, minerals and water. By encroaching on the host, they also block sunlight, further compromising tree health. Poplar propagation is typically carried out by stem planting, but if the stem is infected, its cultivation will be affected. Consequently, *D. falcata* emergence poses a severe threat to Poplar cultivars.

This semi-parasitic plant has not garnered much attention from botanists or the general public because it primarily infects woody plants, which do not hold the same economic significance as cereal and pulse-yielding plants [14]. Certain agricultural practices in mango orchards have been recommended to control bird pollination, pollen development, and seed dispersal of *D. falcata* [2]. However, there is a lack of knowledge regarding the control of *Dendrophthoe* in timber species.

Table 1. Observations of *D. falcata* infestation in *P. deltoides* and *M. dubia* Plantations

Species	Trees infected (%)	Trees died (%)	Average number of galls/Infected tree
<i>Populus deltoides</i>	20	10	18
<i>Melia dubia</i>	45	-	7



Fig. 2. Close view of galls in poplar (left) and melia (right) trees

4. CONCLUSION

The common practice is mechanical weeding, which involves cutting or pruning the affected branches on host trees. Chemical weeding is neither effective nor widely known among farmers. Therefore, to protect timber trees from infection, we can rely on cutting or pruning, which controls *D. falcata* infestation. Further research is essential to understand *Dendrophthoe*'s distribution, host specificity, and dispersal mechanisms to protect valuable agroforestry species like Poplar and Melia from its detrimental effects.

DISCLAIMER (ARTIFICIAL INTELLIGENCE)

Author(s) hereby declare that NO generative AI technologies such as Large Language Models (ChatGPT, COPILOT, etc.) and text-to-image generators have been used during the writing or editing of this manuscript.

COMPETING INTERESTS

Authors have declared that no competing interests exist.

REFERENCES

1. Sampathkumar R, Selvaraj R. Some new host for *Dendrophthoe falcata* (Linn. f.) Ettingh. (*Loranthus longiflorus* Desr.). Journal of Bombay Natural History Society. 1981;78:200–203.
2. Subhashini K, Ratna KPK, Gaddeyya GA. Comprehensive review on *Dendrophthoe falcata* (L.f.) Ettingsh. (Loranthaceae). The Journal of the Society for Tropical Plant Research. 2019;6(3):514–520. DOI: 10.22271/tpr.2019.v6.i3.064
3. Singh RS, Plant diseases, 6th edition. New Delhi: Oxford and IBH Publishing Co. Pvt. Ltd, India. 1996:540.
4. Sallé G. Germination and establishment of *Viscum album* L. In: Calder M., Bernhardt P. (eds.), The biology of mistletoes. Sydney: Academic Press Australia. 1983;145–159.
5. Gedalovich E, Kuijt J, Carpita NC. Chemical composition of viscin, an adhesive involved in dispersal of the parasite *Phoradendron californicum* (Viscaceae). Physiological and Molecular Plant Pathology. 1988;32:61–76.
6. Alam MK. Flora of Bangladesh - Loranthaceae. Bangladesh National Herbarium. Bangladesh Agricultural Research Council. 1986;33:1.
7. Fedorov A.A. Chromosome numbers of flowering plants. Moscow: Academy of Sciences of U.S.S.R.; 1969.
8. Daud A, Gallo A, Sanchez RA. Antimicrobial properties of *Phrygilanthus acutifolius*. Journal of Ethnopharmacology. 2005;99:193–197.
9. Kong D, Wang L, Niu Y, Cheng L, Sang B, Wang D, Tian J, Zhao W, Liu X, Chen Y, Wang F, Zhou H, Jia R. *Dendrophthoe falcata* (L.f.) Ettingsh. And *Dendrophthoe pentandra* (L.) Miq.: A review of traditional medical uses, phytochemistry, pharmacology, toxicity and applications. Front. Pharmacol. 2023;14:1096379. DOI: 10.3389/fphar.2023.1096379
10. Sastry BN. The Wealth of India (Raw Materials). India: Council of Scientific and Industrial Research. 1952;34.
11. Pattanayak SP, Sunita P. Wound healing, anti-microbial and antioxidant potential of *Dendrophthoe falcata* (L.f.) Etting. Journal of Ethnopharmacology. 2008;120:241–247.
12. Pattanayak SP, Mazumder PM, Sunita P. *Dendrophthoe falcata* (L.f) Ettingsh: A consensus review. Pharmacognosy Review. 2008;2:359–368.
13. Gill LS, Hawksworth FG. The mistletoes. A literature review. Tech. Bull. U.S. Dep. Agric.1961;1242:1–87.
14. Thriveni MC, Shivamurthy GR, Amruthesh KN, Vijay KGR. Mistletoes and their hosts in Karnataka, Journal of American Science. 2010;6(10):827-835.
15. Fischer CEC. Loranthaceae of Southern India and their host plants. Rec. Bot. Surv. India. 1926;11:155-195.
16. Sikder M, Khair A. Prevalence of plant parasitic infestation, Jahangirnagar University Campus. Bangladesh Journal of Life Sciences. 2011;23(2):25-31.
17. Sambandam CN. Some new combinations of *Loranthus longiflorus* Desr. and host species. Annamalai Univ. Agric. Mag. 1966;6:63-64.
18. Sampathkumar R, Kunchithapatham J. Observations on the host range in *Loranthus longiflorus* Desr. J. Bombay nat. Hist. Soc. 1969;65:804-805.
19. Sampathkumar R. Further studies on the host range in *Loranthus longiflorus* Desr. J. Bombay nat. Hist. Soc. 1970;67:360-361.
20. Johri BM, Bhatnagar P. Loranthaceae. Bot. Monograph No.8 New Delhi: C.S.I.R. 1972;155.

21. Singh A. Exploration of the host plant of *Dendrophthoe falcate* on the Banaras Hindu University main Campus. Anusandhan Vigyan Shodh Patrika. 2017;5(1):54-56.
22. Kuramana S, Gandipilli G, Kumar RPK. Studies on Biology, Seed dispersal and Host interaction of *Dendrophthoe falcata* (L.f.) Etting. - A stem parasite of *Mangifera indica* L. (Mango). World Journal of Advanced Research and Reviews. 2020;8(3):097–103.
23. Watson L, Dallwitz MJ. The families of flowering plants: description, illustration, identification, and information; 1992. Available:<http://en.wikipedia.org/wiki/Loranthaceae>
24. Mehrotra RS, Aggarwal A. Plant Pathology, 2nd edition. New Delhi: Oxford & IBH. 2004;781.
25. Singh RS, Plant diseases, 6th edition. Oxford and IBH Publishing Co. Pvt. Ltd, New Delhi, India, 1996;540.
26. Docteres VL. On the biology of some Javanese Loranthaceae and the role of birds in their life history. Beaufortia. 1954;4(41):105-207.
27. Kuijtit J. A revision of the Loranthaceae of Cost Rica. Bot. Jahrb. 1964;83: 250-326.

Disclaimer/Publisher's Note: The statements, opinions and data contained in all publications are solely those of the individual author(s) and contributor(s) and not of the publisher and/or the editor(s). This publisher and/or the editor(s) disclaim responsibility for any injury to people or property resulting from any ideas, methods, instructions or products referred to in the content.

© Copyright (2024): Author(s). The licensee is the journal publisher. This is an Open Access article distributed under the terms of the Creative Commons Attribution License (<http://creativecommons.org/licenses/by/4.0>), which permits unrestricted use, distribution, and reproduction in any medium, provided the original work is properly cited.

Peer-review history:

The peer review history for this paper can be accessed here:

<https://www.sdiarticle5.com/review-history/126655>