



OPEN ACCESS

EDITED BY

Angela Briganti,
University of Pisa, Italy

REVIEWED BY

Ismael Hernández Avalos,
National Autonomous University of
Mexico, Mexico

Francesco Aprea,
Hospital Veterinario Canis Mallorca, Spain

*CORRESPONDENCE

Alex Bukoski
✉ bukoskia@missouri.edu

RECEIVED 29 January 2024

ACCEPTED 13 May 2024

PUBLISHED 24 May 2024

CITATION

Bukoski A, Downs J, Hodgson DS, Le-Bert CR, Thomen R, Flors L, Thombs L and Bailey J (2024) Cardiopulmonary effects of apneustic anesthesia ventilation in anesthetized pigs: a new mode of ventilation for anesthetized veterinary species. *Front. Vet. Sci.* 11:1378617. doi: 10.3389/fvets.2024.1378617

COPYRIGHT

© 2024 Bukoski, Downs, Hodgson, Le-Bert, Thomen, Flors, Thombs and Bailey. This is an open-access article distributed under the terms of the [Creative Commons Attribution License \(CC BY\)](https://creativecommons.org/licenses/by/4.0/). The use, distribution or reproduction in other forums is permitted, provided the original author(s) and the copyright owner(s) are credited and that the original publication in this journal is cited, in accordance with accepted academic practice. No use, distribution or reproduction is permitted which does not comply with these terms.

Cardiopulmonary effects of apneustic anesthesia ventilation in anesthetized pigs: a new mode of ventilation for anesthetized veterinary species

Alex Bukoski^{1*}, John Downs^{2,3}, David S. Hodgson⁴, Carolina R. Le-Bert⁵, Robert Thomen⁶, Lucia Flors⁷, Lori Thombs⁸ and James Bailey²

¹Department of Veterinary Medicine and Surgery, College of Veterinary Medicine, University of Missouri, Columbia, MO, United States, ²Innovative Veterinary Medicine, Ponte Vedra, FL, United States, ³Department of Anesthesiology, College of Medicine, University of Florida, Gainesville, FL, United States, ⁴Department of Clinical Sciences, College of Veterinary Medicine, Kansas State University, Manhattan, KS, United States, ⁵U.S. Navy Marine Mammal Program, Naval Information Warfare Center Pacific, San Diego, CA, United States, ⁶Department of Radiology, School of Medicine, University of Missouri, Columbia, MO, United States, ⁷Department of Radiology, Keck School of Medicine, University of Southern California, Los Angeles, CA, United States, ⁸Department of Statistics, College of Arts and Science, University of Missouri, Columbia, MO, United States

Objective: To compare the cardiopulmonary effects of apneustic anesthesia ventilation (AAV) and conventional mechanical ventilation (CMV) in anesthetized pigs and to describe a new mode of ventilation for anesthetized veterinary species.

Study design: Randomized, crossover design without washout.

Animals: Twelve healthy, female white Landrace pigs.

Methods: Following ketamine-midazolam premedication and anesthetic induction with propofol, the trachea was intubated, and each pig was positioned in dorsal recumbency. Anesthesia was maintained with propofol and sufentanil infusions. Pigs were instrumented and their lungs were sequentially ventilated with each mode, in random order, for 1 h according to predefined criteria [fraction of inspired oxygen (FiO₂) = 0.21, 10 mL kg⁻¹ tidal volume (V_T), and arterial carbon dioxide tension (PaCO₂) within 40–45 mmHg]. Cardiopulmonary data were collected at baseline, 30 and 60 min. In 8 pigs, thoracic computed tomography (CT) was performed following the 60 min time point for each mode of ventilation and images were analyzed to quantify lung aeration. The effects of ventilation mode, time, and order were analyzed using repeated measures ANOVA. Paired *t*-tests were used to compare lung aeration between modes. Significance was defined as *p* < 0.05.

Results: Data from 12 pigs were analyzed. A significant effect of mode was found for heart rate, mean arterial pressure (MAP), pulmonary artery occlusion pressure, cardiac index (CI), stroke volume index, systemic vascular resistance, pulmonary vascular resistance, oxygen delivery index (DO₂I), oxygen extraction ratio (O₂ER), V_T, arterial oxygen tension, arterial hemoglobin saturation, PaCO₂, end-tidal carbon dioxide tension, alveolar dead space (V_{Dalv}/V_{Talv}), venous admixture (\dot{Q}_s/\dot{Q}_t), mean airway pressure, and dynamic compliance index (C_{RS}I). Order effects were also observed for some cardiovascular and respiratory variables. For the eight pigs that underwent thoracic CT, AAV resulted in significantly larger

proportions of normally and hyperaerated lung while CMV resulted in larger proportions of hypoaerated and atelectatic lung.

Conclusions: In dorsally recumbent anesthetized pigs, ventilated with $\text{FiO}_2 = 0.21$, both modes of ventilation supported adequate oxygenation while AAV resulted in higher C_{RSI} , and lower $V_{\text{Dalv}}/V_{\text{Talv}}$ and \dot{Q}_s/\dot{Q}_t , compared with CMV. AAV was also associated with lower MAP, CI, and DO_2I and higher O_2ER compared with CMV. Further investigation of AAV in anesthetized animals is warranted.

KEYWORDS

apneustic anesthesia ventilation, conventional mechanical ventilation, porcine, anesthesia, FiO_2

1 Introduction

Mechanical ventilation often is utilized in the anesthetized veterinary patient to prevent respiratory gas exchange derangements including hypoxemia and hypercapnia. Such derangements are common because general anesthesia is associated with a variety of pathophysiologic pulmonary abnormalities including decreased functional residual capacity (FRC), hypoventilation, and ventilation-perfusion (V/Q) mismatching (1). In veterinary medicine, the traditional approach to managing these gas exchange impairments has included the use of elevated fraction of inspired oxygen (FiO_2 ; here defined as an $\text{FiO}_2 > 0.21$ needed to maintain arterial hemoglobin saturation $> 90\%$) in combination with some form of conventional mechanical ventilation (CMV; here defined as intermittent positive pressure ventilation in the absence of alveolar recruitment maneuvers and positive end-expiratory pressure).

Although elevated FiO_2 readily corrects hypoxemia produced by high alveolar carbon dioxide tension and V/Q mismatch, its use may encourage the formation of absorption atelectasis (2–5). Thus, the use of $\text{FiO}_2 < 1$ has been investigated, although findings are mixed as to its benefit and may be species dependent [e.g., see (6–19)]. Furthermore, the use of elevated FiO_2 in animals that are hypoxemic secondary to abnormally high venous admixture masks, rather than treats, the underlying causes (i.e., pulmonary shunt and excessive low V/Q mismatching). Compared with elevated FiO_2 , the use of CMV directly and reliably addresses the cause of hypercapnia (i.e., alveolar hypoventilation). However, CMV alone has proven to be unreliable as a treatment for hypoxemia secondary to atelectasis and elevated venous admixture. Thus, within the CMV paradigm, additional strategies have been described including flow controlled expiration (20, 21), positive end-expiratory pressure (PEEP) and alveolar recruitment maneuvers (ARMs) [e.g., see (22–34)]. Outside the CMV paradigm, strategies such as continuous positive airway pressure (CPAP) (35–37) and apneustic anesthesia ventilation (AAV) (10) have also been described.

AAV is a novel mode of mechanical ventilation first described in human beings (38) and, more recently, in the horse (10). Conceptually distinct from CMV (see Figure 1) and originally described as “intermittent CPAP”, AAV is defined by 4 independent parameters: P_{HIGH} , P_{LOW} , T_{HIGH} , and T_{LOW} (see Figure 2). The first, P_{HIGH} , determines an elevated baseline pressure that

is continuously applied except during time-cycled, intermittent releases to a set lower pressure (P_{LOW}). These transient and rapid releases from P_{HIGH} to P_{LOW} produce tidal ventilation and carbon dioxide elimination. The time parameters T_{HIGH} and T_{LOW} , which together define the duration of the respiratory cycle and determine the respiratory rate (also termed the “release rate”), are set such that T_{HIGH} (the time of applied P_{HIGH}) is significantly longer than T_{LOW} (the time of applied P_{LOW}). This strategy maximizes the time at P_{HIGH} which supports and promotes alveolar recruitment and maintenance of lung volume. To avoid alveolar collapse during release, T_{LOW} is set to prevent stagnation of the expiratory flow (i.e.,

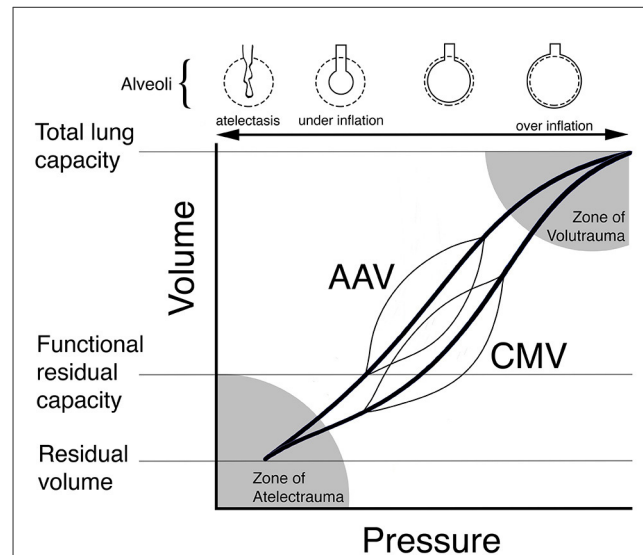


FIGURE 1

Theoretical schematic illustration of dynamic pressure-volume curves (thin lines) for conventional mechanical ventilation (CMV) and apneustic anesthesia ventilation (AAV) superimposed on individual pressure-volume curves (bold lines) for the respiratory system. AAV was designed to preserve lung architecture and compliance in the anesthetized human by periodically releasing airway pressure from a high to low level while maintaining lung volume at or above functional residual capacity (FRC). By contrast, CMV ventilates the lung from below FRC leading to the development of atelectasis, shifting of the pressure-volume curve to the right and lower compliance. In this scenario, higher pressures are required during CMV to achieve the same tidal volume. Reproduced with permission from Innovative Veterinary Medicine.

an expiratory flow of zero) (39). At the end of each release, airway pressure is rapidly transitioned from P_{LOW} to P_{HIGH} . Although designed to optimize lung function in the anesthetized human by elevating lung volume above FRC to prevent progressive formation of atelectasis and to minimize the occurrence of postoperative pulmonary complications, lung volume is rarely measured in the clinical setting. As a surrogate for lung volume, measurement of the dynamic compliance of the respiratory system via spirometry is used to set P_{HIGH} and P_{LOW} in a manner such that an optimal compliance is achieved and maintained (40). Thus, AAV represents a significant departure from the CMV paradigm in which a lower baseline pressure is intermittently cycled to a higher peak pressure to achieve tidal ventilation and most of the respiratory cycle is spent at the lower baseline pressure.

The objectives of this study were: (1) to describe an implementation of AAV in anesthetized pigs using a custom-built ventilator; and (2) to determine if this method of ventilating anesthetized pigs would provide cardiopulmonary advantages compared with traditional CMV using $FiO_2 = 0.21$. We hypothesized that: (1) AAV would result in improved indices of pulmonary function (e.g., less venous admixture, less atelectasis, and higher dynamic compliance) compared with CMV; and (2) both AAV and CMV would result in acceptable indices of cardiovascular function.

2 Materials and methods

2.1 Study design

Twelve female white Landrace pigs weighing 43.1 ± 3.7 kg (mean \pm standard deviation), aged between 13 and 16 weeks, and assessed to be of American Society of Anesthesiologists physical status classification 1 were each anesthetized once in a randomized, crossover design without washout to compare the cardiopulmonary effects of two modes of mechanical ventilation: apneustic anesthesia ventilation (AAV) and conventional mechanical ventilation (CMV). Experiments were performed at the University of Missouri, Veterinary Health Center and all animals were determined healthy based on limited physical examination and hematology and biochemistry profiles. Order of mode application was randomly assigned using a binary random number generator (www.random.org; Dublin, Ireland) with the constraint that six animals received AAV, and six received CMV, before transitioning to the opposite mode. At the conclusion of each experiment, animals were humanely euthanized via intravenous overdose of potassium chloride. An *a priori* power analysis (G*Power 3.1.9.2; University of Düsseldorf, Germany) (41) for repeated measures analysis of variance (ANOVA) design with $\alpha = 0.05$, $1 - \beta = 0.8$, effect size of 0.5 and repeated measures correlation of 0.5 suggested a sample size of 10.

Each experiment proceeded in three phases: instrumentation, data collection during ventilation with the first mode, and data collection during ventilation with the second mode. The first mode of ventilation was also applied during the instrumentation phase and was initiated immediately following intubation. Each data collection period lasted 1 h, with data collected at baseline (T0), 30 min (T30), and 60 min (T60). Prior to each data

collection period, a 20-min period for stabilization of monitored parameters and achievement of ventilation targets was provided. In eight animals, thoracic computed tomography (CT) imaging was performed immediately after the first and second data collection periods.

2.2 Anesthesia

Pigs were premedicated with intramuscular ketamine (9.14 ± 1.44 mg kg^{-1} ; Zetamine 100 mg mL^{-1} ; VETone, ID, USA) and midazolam (0.81 ± 0.15 mg kg^{-1} ; Midazolam Injection USP 5 mg mL^{-1} ; West-Ward Pharmaceuticals, NJ, USA) given in the epaxial musculature. Once the animal could be safely handled, an auricular vein was catheterized (20 GA BD Insyte; Becton Dickinson Infusion Therapy Systems Inc., UT, USA) to allow induction of general anesthesia with intravenous (IV) propofol (Diprivan 10 mg mL^{-1} ; Fresenius Kabi USA LLC, IL, USA) given to effect (3.0 ± 1.1 mg kg^{-1} in five animals, no propofol was required in the remaining seven) for orotracheal intubation with a cuffed endotracheal tube (Portex 8.5 mm Cuffed PVC Endotracheal Tube; Smiths Medical ASD Inc., OH, USA). Propofol infusion (Medfusion 3500 Syringe Infusion Pump; Smiths Medical ASD Inc.) was initiated at 0.5 mg $kg^{-1} min^{-1}$ IV and, based on indicators of anesthetic depth, reduced to a maintenance level of 0.3 mg $kg^{-1} min^{-1}$ IV for the duration of the experiment. Sufentanil (Sufentanil Citrate Injection USP 50 mcg mL^{-1} ; West-Ward Pharmaceuticals) was infused (Medfusion 3500 Syringe Infusion Pump; Smiths Medical ASD Inc.) at 0.05 mcg $kg^{-1} min^{-1}$ IV throughout. A 5 mL kg^{-1} IV bolus of isotonic crystalloid (Lactated Ringer's; Baxter Healthcare, IL, USA) was followed by maintenance infusion at 5 mL $kg^{-1} hr^{-1}$ IV by gravity drip. Body temperature was supported using an active forced-air warming device (Bair Hugger; 3M Health Care, MN, USA). Neuromuscular blocking drugs were not used.

2.3 Experimental protocol

Once intubated and positioned in dorsal recumbency, a spirometer (DolVent™ EUI; Innovative Veterinary Medicine, FL, USA) was placed between the wye-piece of the breathing system and the tracheal tube connector for measurement of respiratory variables corrected for gas temperature and composition. Spirometer accuracy was checked at the beginning of each experimental day using a 7 L calibrated syringe (Model 4900; Hans Rudolph Inc., KS, USA) set to deliver 1 L volume to ensure measured volumes were within ± 15 mL of delivered volumes. Spirometry derived variables common to both modes included tidal volume (V_T), respiratory rate (f_R), mean airway pressure (P_{aw}), and total dynamic compliance of the respiratory system (C_{RS}). CMV specific variables included inspiratory-to-expiratory ratio (I:E), peak inspiratory pressure (PIP) and end-expiratory pressure (EEP). AAV specific variables included P_{HIGH} , P_{LOW} , T_{HIGH} and T_{LOW} . All respiratory variables were recorded directly from the spirometer except for airway gas concentrations (see below) and mean P_{aw} in AAV mode, which was computed offline from raw pressure-time waveforms (Matlab Version R2018b; The MathWorks Inc., MA,

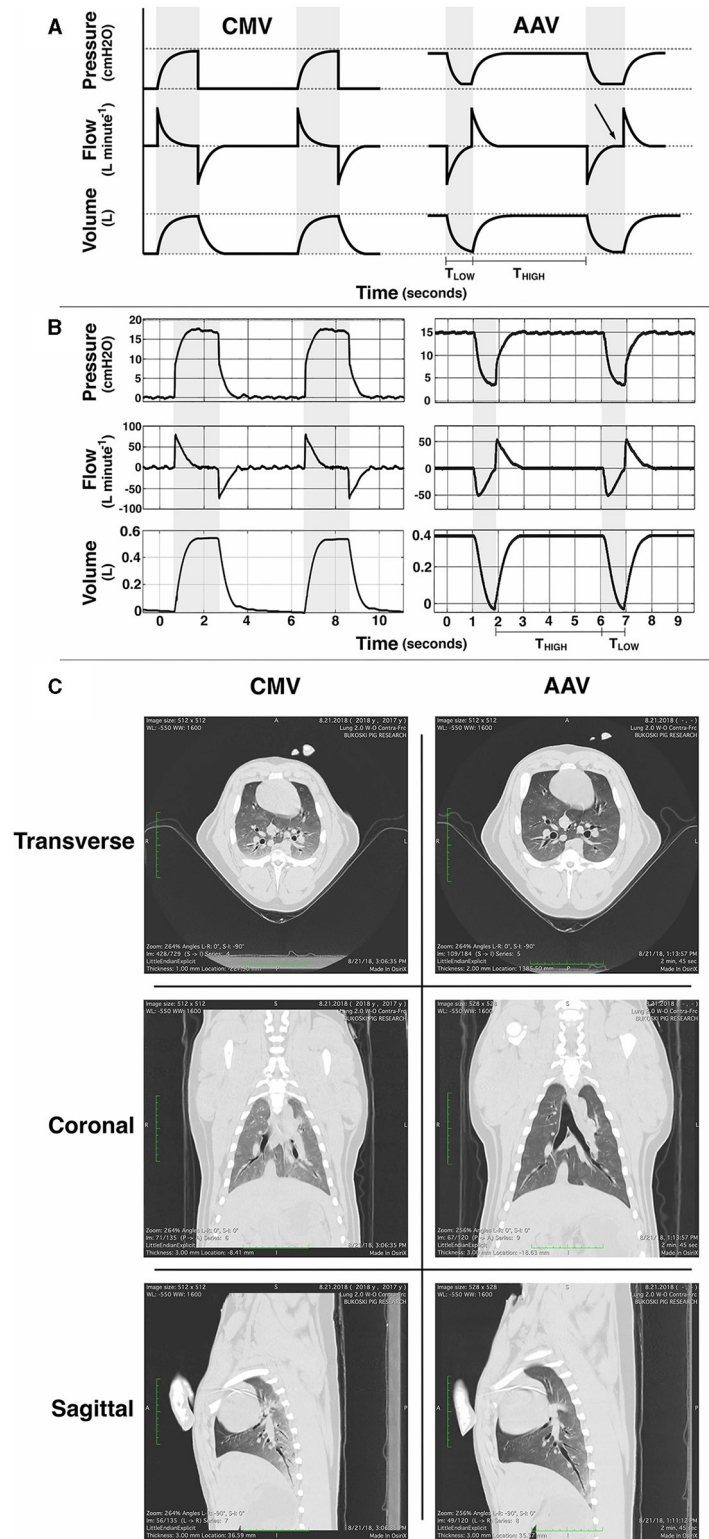


FIGURE 2

(A) Schematic idealized illustrations and **(B)** examples of observed pressure, flow and volume vs. time waveforms for conventional volume-controlled mechanical ventilation (CMV) and apneustic anesthesia ventilation (AAV). Gray background indicates periods of tidal ventilation corresponding to inspiratory time during CMV and the time (T_{LOW}) at the low pressure setting (P_{LOW}) during AAV. White background indicates expiratory time during CMV and the time (T_{HIGH}) of applied high pressure (P_{HIGH}) during AAV. CMV intermittently raises pressure from ambient to peak inspiratory pressure with the majority of cycle time spent at ambient pressure. AAV intermittently releases pressure from P_{HIGH} to P_{LOW} to preserve lung volume. Importantly, the duration of each AAV release (T_{LOW}) is limited to prevent expiratory flow stagnation (i.e., an expiratory flow of zero). In **(A)** the first AAV release illustrates proper limitation of release time whereas the second illustrates excessively long release time with flow stagnation (arrow). **(C)** Example thoracic computed tomography (CT) images from an anesthetized pig at the end of 1 h of CMV and 1 h of AAV (with AAV as the first mode). During each scan, airway pressure was held at the lowest pressure associated with each mode for no >30 s: ambient barometric pressure for CMV and P_{LOW} for AAV. Reproduced with permission from Innovative Veterinary Medicine.

USA) using custom written scripts. For CMV and AAV, C_{RS} was computed as $V_T/(PIP - EEP)$ and $V_T/(P_{HIGH} - P_{LOW})$, respectively.

A multiparameter monitor (Carescape B650 with iCollect Version 5.0; GE Healthcare, Finland) was used for monitoring ECG, pulse oximetry, side-stream airway gases [F_{IO_2} and end-tidal carbon dioxide tension ($PE'CO_2$)], mean systemic and mean pulmonary artery pressures (MAP and MPAP, respectively), and esophageal temperature. Airway gases were collected at the level of the machine end of the endotracheal tube. Calibration of the airway gas module with manufacturer designated gas (755571-HEL; GE Healthcare) was performed prior to each experiment. Surgical shutdown using standard techniques exposed the left carotid artery which was catheterized (4F Micro-introducer KIT-076-00; Innovative Veterinary Medicine) for systemic arterial blood sampling and pressure monitoring. Similarly, the left internal jugular vein was catheterized with an introducer (8F Catheter Introducer; Argon Medical Devices, TX, USA) through which a Swan-Ganz monitoring catheter (7F Swan-Ganz 111F7; Edwards Lifesciences LLC, CA, USA) was placed in the pulmonary artery using pressure guidance. This catheter was used for measurement of MPAP, pulmonary artery wedge-occlusion pressure (PAOP), and collection of mixed venous blood samples. The right external jugular vein was percutaneously catheterized (4F Micro-introducer KIT-076-00; Innovative Veterinary Medicine) using ultrasound guidance for injection of lithium chloride used for cardiac output determinations. For each experiment, new, disposable pressure transducers (Deltran II; Utah Medical Products Inc., UT, USA) were zeroed to atmospheric pressure and leveled to the point of the shoulder. Cardiac output was measured using lithium dilution (LiDCO Unity; LiDCO, London, UK) with the sensor connected to the carotid artery catheter. Manufacturer provided sterile lithium chloride ($0.004 \text{ mmol kg}^{-1}$ per determination) was injected using the right external jugular vein catheter according to manufacturer guidance.

At each timepoint, cardiopulmonary data were recorded, systemic arterial and mixed venous (i.e., pulmonary arterial) blood samples were simultaneously collected (safePICO 1.7 mL Aspirator; Radiometer, Brønshøj, Denmark) for immediate analysis (ABL90 Flex; Radiometer), and CO was measured. Arterial blood analysis determined arterial pH (pHa), arterial oxygen tension (PaO_2), arterial carbon dioxide tension ($PaCO_2$), and hemoglobin concentration ([Hb]). Mixed venous blood analysis determined $P\bar{v}O_2$. Arterial (SaO_2) and mixed venous ($S\bar{v}O_2$) hemoglobin saturations were determined using a porcine specific oxyhemoglobin dissociation curve (42) and all blood analysis values were corrected to body temperature (43).

From this data, the following variables were calculated: stroke volume (SV) as CO/HR , alveolar dead space as a fraction of total alveolar ventilation (V_{Dalv}/V_{TAlv}) as $(PaCO_2 - PE'CO_2)/PaCO_2$, systemic vascular resistance (SVR) as $SVR = MAP/CO$, arterial oxygen content (CaO_2) as $CaO_2 = 1.36 \times [Hb] \times SaO_2 + 0.003 \times PaO_2$, mixed venous oxygen content ($C\bar{v}O_2$) as $C\bar{v}O_2 = 1.36 \times [Hb] \times S\bar{v}O_2 + 0.003 \times P\bar{v}O_2$, venous admixture (\dot{Q}_s/\dot{Q}_t) as $(Cc'O_2 - CaO_2)/(Cc'O_2 - C\bar{v}O_2)$, oxygen delivery (DO_2) as $CaO_2 \times CO$, and oxygen extraction ratio (O_2ER) as $(CaO_2 - C\bar{v}O_2)/CaO_2$. The notation $Cc'O_2$ denotes pulmonary end-capillary blood oxygen content computed from alveolar oxygen tension determined as

$F_{IO_2} \times (P_B - P_{H_2O}) - PaCO_2/R - F_{IO_2} \times PaCO_2 \times (1 - R)/R$, where R is the respiratory quotient (assumed equal to 0.8), $PaCO_2$ is alveolar CO_2 tension (approximated by $PaCO_2$), P_B is barometric pressure, and P_{H_2O} is the saturated vapor pressure of water. All calculations were performed at body temperature. Some variables were indexed to body mass [denoted by an appended I (e.g., SVI for stroke volume index)].

2.4 Mechanical ventilation

Animals were directly ventilated using medical grade air ($F_{IO_2} = 0.21$) with a mechanical ventilator (DolVentTM, Innovative Veterinary Medicine) capable of delivering both AAV and CMV. For both modes, the V_T and $PaCO_2$ goals were 10 mL kg^{-1} and within 40–45 mmHg, respectively. In CMV mode, the applied airway pressure and f_R were adjusted to achieve the V_T and $PaCO_2$ goals, respectively, and the ventilator was set to maintain zero EEP. In AAV mode, ventilator settings proceeded as follows: (1) an initial f_R of $10 \text{ breaths min}^{-1}$ was selected, (2) P_{HIGH} and P_{LOW} were adjusted up and down to achieve optimal C_{RS} while maintaining V_T at 10 mL kg^{-1} , and (3) f_R was adjusted to meet the $PaCO_2$ target. At all times during this process, T_{LOW} was set to the maximum value that prevented an expiratory flow of zero based on visual inspection of the flow waveform.

2.5 Computed tomography imaging

Thoracic computed tomography (CT) imaging (Aquilion 64 Fast Whole Body CT Scanner; Toshiba America Medical, CA, USA) was performed on a subset of eight randomly selected animals at the end of each 1 h ventilation period. Half of the subset received CMV as the first mode and half received AAV as the first mode. During each scan, ventilation was held at the lowest pressure associated with each mode for no >30 s: ambient barometric pressure for CMV and P_{LOW} for AAV. The scanning protocol was 120 kV, 500 mA, Eff mAs 283, FOV – Medium (320), 0.75 rotation time, HP 85, 0.5×64 thickness. All images were evaluated for quality by a radiologist blinded to the mode of ventilation.

Semi-automatic segmentation and quantitative analysis was performed using custom software in Matlab (Version R2018b; The MathWorks Inc.) and R (Version 4.0.5; R Foundation for Statistical Computing, Vienna, Austria). Segmentation of the lungs, major airways, and trachea from soft tissue was first performed using a semi-automatic flood-fill routine with threshold of -224 Hounsfield units (HU) and seeded within the trachea. Airway voxels were then segmented from the lungs using a similar flood-fill routine with threshold of -800 HU. A 10-pixel smoothing filter was also applied to remove airway walls. Regions of the lung parenchyma excluded from these initial segmentations such as atelectatic regions of >-224 HU were added to the lung segmentation manually using the open-source image computing platform 3D Slicer (44). The final segmented voxels were then binned into four categories by Hounsfield Unit (HU) threshold: hyperaerated (<-900 HU), normally aerated (-900 to -500 HU), hypoaerated (-500 to -100 HU), and atelectasis (>-100 HU). This

allowed for quantitative analysis of absolute and relative changes in parenchymal structure across multiple ventilation methods.

2.6 Statistical analysis

Statistical modeling of the cardiopulmonary data utilized repeated measures three-way ANOVA with main factors mode of ventilation, time point, and order (SAS Version 9.4; SAS Institute, NC, USA). The full model, with specified covariance structure, was fit and the assumption of normality was checked for each variable by inspection of residual diagnostics including scatter plots of residuals as a function of the linear predictor, residual histograms, and residual quantile-quantile plots. These checks indicated no need for normalizing transformation. We anticipated a significant mode effect and determined the direction of the difference. For order, of interest was to compare means within mode using a reparameterized model to simplify contrast estimation. When interactions were not significant, main effects were interpreted using the overall F-statistic and p -value, followed by *post hoc* mean comparisons and contrast estimation using Tukey's simultaneous inference p -value adjustment. Paired t -tests were used to compare experimental times between modes of ventilation and to compare each lung inflation category defined by thoracic computed tomography imaging between modes of ventilation. Statistical significance was set at $p < 0.05$.

3 Results

Cardiopulmonary data from 12 pigs, and thoracic CT imaging data from 8 pigs, were analyzed. For animals receiving CMV first and AAV first, respectively, the mean \pm standard deviation experimental times were: time from premedication to the start of mechanical ventilation (i.e., intubation), 34 ± 13 min and 35 ± 9 min ($p = 0.8968$); time from the start of mechanical ventilation to T0 for the first data collection period (includes instrumentation and stabilization), 86 ± 40 min and 87 ± 20 min ($p = 0.9426$); total time under the first mode of ventilation (includes instrumentation, stabilization, data collection, and time between T60 and switching to the second mode), 170 ± 33 min and 167 ± 32 min ($p = 0.8971$). Within the repeated measures ANOVA model, no statistically significant differences were found for body temperature ($p = 0.1075$). The mean \pm standard deviation body temperatures for CMV and AAV, regardless of timepoint and order, were 37.3 ± 0.5 °C and 37.4 ± 0.5 °C, respectively.

Descriptive statistics for parameters unique to each ventilation mode are given in Table 1. For both modes of ventilation, these were generally stable over the 1-h data collection period. Measured and calculated respiratory and cardiovascular variables are provided in Tables 2, 3, respectively. These tables also provide p -values from the repeated measures ANOVA modeling that quantify the overall effect of mode (i.e., AAV vs. CMV, regardless of order or time point) and the effect of order within each mode (i.e., AAV first vs. AAV second and CMV first vs. CMV second, regardless of time point).

No mode differences or order effects were found for f_R and spontaneous ventilation was not observed in either mode. For both modes of ventilation, V_T exceeded the target value of 10 mL

TABLE 1 Descriptive statistics of variables recorded during apneustic anesthesia ventilation (AAV) and conventional mechanical ventilation (CMV) with zero positive end-expiratory pressure in 12 dorsally recumbent anesthetized pigs at baseline (T0), 30 min (T30), and 60 min (T60).

Ventilation mode	Variable	Time point		
		T0	T30	T60
AAV	P_{HIGH} (cmH ₂ O)	17.1 ± 1.6	16.8 ± 1.5	16.4 ± 1.7
	P_{LOW} (cmH ₂ O)	4.5 ± 1.0	4.5 ± 1.1	4.4 ± 0.9
	T_{HIGH} (s)	5.1 ± 1.0	5.0 ± 1.1	4.9 ± 1.5
	T_{LOW} (s)	0.8 ± 0.1	0.8 ± 0.1	0.8 ± 0.1
CMV	PIP (cmH ₂ O)	14.8 ± 2.0	14.8 ± 1.7	15.2 ± 1.7
	I:E	0.6 ± 0.1	0.6 ± 0.1	0.6 ± 0.1

Data are presented as mean \pm standard deviation. P_{HIGH} , high pressure; P_{LOW} , low pressure; T_{HIGH} , time at high pressure; T_{LOW} , time at low pressure; PIP, peak inspiratory pressure; I:E, inspiratory-to-expiratory ratio.

kg⁻¹ with those during CMV larger than those during AAV by approximately 1 mL kg⁻¹ ($p < 0.0001$). Both PaO₂ and SaO₂ were higher for AAV compared with CMV ($p < 0.0001$ and $p < 0.0001$, respectively). When AAV was applied first, PaO₂ and SaO₂ were higher than when AAV was applied after CMV. For PaCO₂, mode differences of ~ 1 – 2 mmHg were observed with higher values for CMV compared with AAV ($p = 0.006$), although an order effect was not observed. This contrasts with PE'CO₂ values which were higher for AAV compared with CMV by ~ 1 mmHg ($p = 0.0067$). Within CMV, PE'CO₂ was higher when CMV was applied after, rather than before, AAV. No mode or order differences were detected for pH_a. Alveolar dead space and \dot{Q}_s/\dot{Q}_t were lower ($p < 0.0001$ and $p < 0.0001$, respectively), and mean P_{aw} and C_{RSI} were higher ($p < 0.0001$ and $p < 0.0001$, respectively), for AAV compared with CMV. Of these variables, only \dot{Q}_s/\dot{Q}_t exhibited an order effect. Within AAV mode, \dot{Q}_s/\dot{Q}_t was higher when AAV was applied after CMV and, within CMV mode, \dot{Q}_s/\dot{Q}_t was higher when CMV was applied first.

All cardiovascular variables, except for MPAP, evidenced mode effects and/or order effects. Variables exhibiting mode effects, but not order effects, included: HR (higher for AAV, $p < 0.0001$), PAOP (higher for AAV, $p < 0.0001$), DO₂I (lower for AAV, $p < 0.0001$), and O₂ER (higher for AAV, $p < 0.0001$). MAP ($p < 0.0001$), CI ($p < 0.0001$), and SVI ($p < 0.0001$) were lower during AAV compared with CMV. MAP was also higher within CMV mode when CMV was applied first vs. when it was applied second. Within AAV mode, CI was higher when AAV was applied second vs. when it was applied first. However, no order effects within AAV mode were observed for SVI. Rather, for SVI, this variable was higher within CMV mode when CMV was applied first vs. when it was applied second. SVR was higher during AAV and, within CMV, it was higher when CMV was applied first. PVR was lower during AAV compared with CMV ($p = 0.0002$) and, within AAV, was lower when AAV was applied second.

Proportions of lung volume classified as hyperaerated, normally aerated, hypoaerated, and atelectatic are given in Table 4 along with the results of the paired t -tests used for mode comparisons within each category. Significant differences between modes were detected

TABLE 2 Measured and calculated respiratory variables in 12 dorsally recumbent anesthetized pigs ventilated with either apneustic anesthesia ventilation (AAV) or conventional mechanical ventilation (CMV) in random order at baseline (T0), 30 min (T30), and 60 min (T60).

Variable	Order	AAV			CMV			Mode effect	Order effect	
		T0	T30	T60	T0	T30	T60		AAV	CMV
f_R (breaths min^{-1})	AAV \rightarrow CMV	10.7 \pm 0.6	10.5 \pm 0.6	10.5 \pm 0.4	10.5 \pm 0.4	10.8 \pm 0.2	10.5 \pm 0.2	1.0000	0.5451	0.6491
	CMV \rightarrow AAV	10.0 \pm 0.8	11.3 \pm 1.1	11.7 \pm 1.4	11.0 \pm 0.4	10.8 \pm 0.4	11.0 \pm 0.5			
V_T (mL kg^{-1})	AAV \rightarrow CMV	11.6 \pm 0.5	11.5 \pm 0.5	11.2 \pm 0.5	12.7 \pm 0.2	12.5 \pm 0.1	12.5 \pm 0.3	<0.0001	0.6337	0.3442
	CMV \rightarrow AAV	11.6 \pm 0.5	11.2 \pm 0.7	11.0 \pm 0.7	13.4 \pm 0.3	12.9 \pm 0.3	12.6 \pm 0.3			
PaO ₂ (mmHg)	AAV \rightarrow CMV	102 \pm 2	97 \pm 2	95 \pm 2	85 \pm 2	85 \pm 2	83 \pm 2	<0.0001	<0.0001	0.3096
	CMV \rightarrow AAV	89 \pm 1	89 \pm 2	88 \pm 1	85 \pm 1	83 \pm 2	81 \pm 1			
SaO ₂ (%)	AAV \rightarrow CMV	97 \pm 0	96 \pm 0	96 \pm 0	94 \pm 0	94 \pm 0	94 \pm 0	<0.0001	0.0003	0.5322
	CMV \rightarrow AAV	95 \pm 0	95 \pm 0	95 \pm 0	94 \pm 0	94 \pm 0	94 \pm 0			
PaCO ₂ (mmHg)	AAV \rightarrow CMV	39 \pm 1	41 \pm 1	42 \pm 0	43 \pm 1	41 \pm 0	42 \pm 1	0.006	0.3667	0.1301
	CMV \rightarrow AAV	40 \pm 0	41 \pm 1	42 \pm 0	41 \pm 1	41 \pm 1	41 \pm 1			
pHa	AAV \rightarrow CMV	7.48 \pm 0.01	7.47 \pm 0.01	7.47 \pm 0.01	7.47 \pm 0.01	7.48 \pm 0.01	7.48 \pm 0.01	0.2465	0.1768	0.0914
	CMV \rightarrow AAV	7.49 \pm 0.01	7.48 \pm 0.01	7.48 \pm 0.01	7.49 \pm 0.01	7.49 \pm 0.01	7.49 \pm 0.01			
PE' CO ₂ (mmHg)	AAV \rightarrow CMV	40 \pm 1	41 \pm 1	42 \pm 0	41 \pm 1	40 \pm 0	40 \pm 1	0.0067	0.7257	0.0076
	CMV \rightarrow AAV	40 \pm 1	41 \pm 1	42 \pm 1	39 \pm 1	39 \pm 1	40 \pm 1			
$V_{\text{Dalv}}/V_{\text{Talv}}$	AAV \rightarrow CMV	-0.03 \pm 0.03	0 \pm 0	0 \pm 0	0.04 \pm 0.01	0.03 \pm 0.01	0.05 \pm 0.01	<0.0001	0.0644	0.1423
	CMV \rightarrow AAV	0 \pm 0.01	0.02 \pm 0.01	0.01 \pm 0.01	0.06 \pm 0.01	0.05 \pm 0.01	0.04 \pm 0.01			
\dot{Q}_s/\dot{Q}_t	AAV \rightarrow CMV	-0.01 \pm 0.01	-0.01 \pm 0	0 \pm 0.01	0.04 \pm 0.01	0.04 \pm 0.01	0.06 \pm 0.01	<0.0001	0.0004	0.0327
	CMV \rightarrow AAV	0.03 \pm 0	0.03 \pm 0	0.03 \pm 0	0.05 \pm 0.01	0.07 \pm 0.01	0.08 \pm 0.01			
Mean P _{aw} (cmH ₂ O)	AAV \rightarrow CMV	14 \pm 0	14 \pm 1	14 \pm 1	5 \pm 0	5 \pm 0	5 \pm 0	<0.0001	0.8891	0.2152
	CMV \rightarrow AAV	15 \pm 0	14 \pm 1	14 \pm 1	6 \pm 0	6 \pm 0	6 \pm 0			
C _{rs} I (mL cmH ₂ O ⁻¹ kg^{-1})	AAV \rightarrow CMV	0.92 \pm 0.05	0.91 \pm 0.05	0.91 \pm 0.06	0.95 \pm 0.05	0.91 \pm 0.05	0.86 \pm 0.05	<0.0001	0.7228	0.1812
	CMV \rightarrow AAV	0.93 \pm 0.04	0.94 \pm 0.04	0.94 \pm 0.03	0.84 \pm 0.02	0.82 \pm 0.01	0.82 \pm 0.02			

For each variable, data are given for each order of mode application: AAV followed by CMV (AAV \rightarrow CMV) and CMV followed by AAV (CMV \rightarrow AAV).

All values are mean \pm standard error of the mean. The two right-most columns provide p-values for the overall effects of mode of ventilation and order of mode application determined by data modeling with repeated measures ANOVA.

f_R , respiratory rate; V_T , tidal volume; PaO₂, arterial oxygen tension; SaO₂, arterial hemoglobin saturation; PaCO₂, arterial carbon dioxide tension; pHa, arterial pH; PE' CO₂, end-tidal carbon dioxide; $V_{\text{Dalv}}/V_{\text{Talv}}$, alveolar dead space; \dot{Q}_s/\dot{Q}_t , venous admixture; Mean P_{aw}, mean airway pressure; C_{rs}I, dynamic compliance index of the respiratory system.

TABLE 3 Measured and calculated cardiovascular variables in 12 dorsally recumbent anesthetized pigs ventilated with either apneustic anesthesia ventilation (AAV) or conventional mechanical ventilation (CMV) in random order at baseline (T0), 30 min (T30), and 60 min (T60).

Variable	Order	AAV			CMV			Mode effect	Order effect	
		T0	T30	T60	T0	T30	T60		AAV	CMV
HR (beats min ⁻¹)	AAV → CMV	117 ± 7	118 ± 5	118 ± 4	101 ± 4	95 ± 5	95 ± 5	<0.0001	0.1604	0.1652
	CMV → AAV	135 ± 8	131 ± 9	127 ± 9	112 ± 11	110 ± 14	110 ± 14			
MAP (mmHg)	AAV → CMV	61 ± 3	61 ± 2	63 ± 4	70 ± 2	73 ± 3	73 ± 4	<0.0001	0.1751	0.0027
	CMV → AAV	58 ± 2	71 ± 4	69 ± 3	83 ± 3	83 ± 3	84 ± 2			
MPAP (mmHg)	AAV → CMV	24 ± 1	24 ± 1	24 ± 1	24 ± 2	23 ± 1	24 ± 1	0.4465	0.5367	0.4646
	CMV → AAV	24 ± 2	23 ± 1	23 ± 1	23 ± 1	23 ± 1	23 ± 1			
PAOP (mmHg)	AAV → CMV	13 ± 1	13 ± 1	13 ± 1	6 ± 1	7 ± 1	7 ± 1	<0.0001	0.5165	0.0991
	CMV → AAV	14 ± 1	13 ± 1	13 ± 1	5 ± 0	5 ± 1	5 ± 1			
CI (mL min ⁻¹ kg ⁻¹)	AAV → CMV	68 ± 4	70 ± 3	73 ± 4	106 ± 6	108 ± 7	119 ± 5	<0.0001	0.0117	0.1499
	CMV → AAV	77 ± 4	85 ± 5	83 ± 7	106 ± 5	99 ± 3	109 ± 5			
SVI (mL beat ⁻¹ kg ⁻¹)	AAV → CMV	0.61 ± 0.06	0.58 ± 0.03	0.62 ± 0.03	1.09 ± 0.06	1.19 ± 0.07	1.31 ± 0.06	<0.0001	0.6843	0.0009
	CMV → AAV	0.57 ± 0.02	0.65 ± 0.02	0.66 ± 0.02	0.98 ± 0.08	0.98 ± 0.12	1.06 ± 0.10			
SVR (dyne sec cm ⁻⁵)	AAV → CMV	1,683 ± 146	1,698 ± 89	1,622 ± 115	1,226 ± 92	1,304 ± 139	1,145 ± 88	<0.0001	0.2014	0.0440
	CMV → AAV	1,423 ± 74	1,575 ± 90	1,547 ± 55	1,499 ± 134	1,579 ± 107	1,453 ± 112			
PVR (dyne sec cm ⁻⁵)	AAV → CMV	313 ± 24	317 ± 16	285 ± 28	322 ± 36	297 ± 23	272 ± 20	0.0002	0.0104	0.7656
	CMV → AAV	235 ± 23	210 ± 13	226 ± 20	319 ± 27	332 ± 27	294 ± 25			
DO ₂ I (ml min ⁻¹ kg ⁻¹)	AAV → CMV	9.0 ± 0.7	9.2 ± 0.5	9.4 ± 0.7	13.2 ± 0.5	13.0 ± 1.1	14.2 ± 0.8	<0.0001	0.1756	0.8828
	CMV → AAV	9.7 ± 0.6	10.4 ± 0.6	10.0 ± 0.8	13.8 ± 0.8	12.6 ± 0.4	13.8 ± 0.7			
O ₂ ER	AAV → CMV	0.50 ± 0.03	0.51 ± 0.03	0.52 ± 0.04	0.37 ± 0.01	0.40 ± 0.01	0.41 ± 0.01	<0.0001	0.4813	0.0737
	CMV → AAV	0.51 ± 0.03	0.50 ± 0.02	0.47 ± 0.02	0.33 ± 0.02	0.34 ± 0.01	0.36 ± 0.01			

All values are mean ± standard error of the mean. The two right-most columns provide p-values for the overall effects of mode of ventilation and order of mode application determined by data modeling with repeated measures ANOVA.

HR, heart rate; MAP, mean arterial pressure; MPAP, mean pulmonary artery pressure; PAOP, pulmonary artery occlusion pressure; CI, cardiac index; SVI, stroke volume index; SVR, systemic vascular resistance; PVR, pulmonary vascular resistance; DO₂I, oxygen delivery index; O₂ER, oxygen extraction ratio. For each variable, data are given for each order of mode application: AAV followed by CMV (AAV → CMV) and CMV followed by AAV (CMV → AAV).

TABLE 4 Proportions of lung volume classified as hyperaerated, normally aerated, hypoaerated, and atelectatic in eight anesthetized pigs ventilated with apneustic anesthesia ventilation (AAV) and conventional mechanical ventilation (CMV) in random order.

Lung region	AAV	CMV	<i>p</i> -value
Hyperaerated	0.05 ± 0.01	0.03 ± 0.01	0.002
Normally Aerated	0.73 ± 0.02	0.61 ± 0.03	<0.0001
Hypoaerated	0.21 ± 0.03	0.33 ± 0.04	<0.0001
Atelectatic	0.01 ± 0.00	0.03 ± 0.01	0.0062

Paired *t*-tests were used to compare proportions of lung volume between modes for each lung region. Data are presented as mean ± standard error of the mean.

in all categories with AAV resulting in larger proportions of hyperaerated and normally aerated regions and smaller proportions of hypoaerated and atelectatic regions, compared with CMV. Due to the number of pigs that underwent thoracic CT imaging, it was not possible to include order of mode application as a factor in the statistical analysis.

4 Discussion

This study describes a comparison of a new mode of ventilation for animals, AAV, to traditional CMV using low FiO_2 in pigs anesthetized with propofol-based total intravenous anesthesia. Overall, statistically significant mode effects were found for many respiratory and cardiovascular variables. Notably, AAV resulted in higher PaO_2 , lower $V_{\text{Dalv}}/V_{\text{Talv}}$, lower \dot{Q}_s/\dot{Q}_t , and higher C_{RSI} . However, AAV also resulted in lower MAP, lower CI, lower DO_2I , and higher O_2ER . Although less common than the effects of mode of ventilation on cardiopulmonary variables, the use of a cross-over design without washout introduced the statistical factor of order of design (i.e., whether AAV or CMV was applied first).

Ventilation strategies for both AAV and CMV were designed to target normocapnia (here defined as PaCO_2 between 40 and 45 mmHg) and a standard V_{T} of 10 mL kg^{-1} to normalize these variables between modes. These choices, particularly that of normocapnia, resulted in significantly higher mean P_{aw} for AAV vs. CMV by ~8–9 cmH₂O. Because mean airway pressure is an important determinant of venous return and cardiac output (45), the finding of reduced cardiovascular performance, particularly reduced CI and SVI and increased HR, during AAV compared to CMV was not overly surprising but was somewhat unexpected based on one of the authors (JD) clinical experience in humans. Secondary consequences of this effect were reduced DO_2I and increased O_2ER for AAV vs. CMV. Increased mean P_{aw} during AAV also likely contributed to higher PVR and PAOP in this group compared with the CMV group. However, no differences in MPAP were observed between modes. Higher SVR values during AAV can be largely accounted for by observed mode differences when AAV was applied before CMV. Within this ordering, SVR values decreased on switching from AAV to CMV and this change may also be related to reduced mean P_{aw} during CMV.

When AAV was compared to CMV in dorsally recumbent horses anesthetized with isoflurane, no differences in cardiovascular performance or dobutamine consumption

were observed (10). However, in that study, AAV was implemented to maintain moderate hypercapnia while CMV was implemented to maintain normocapnia. The combination of this result without those of the current study, highlights the importance of intentional hypercapnia when implementing AAV. Mild to moderate hypercapnia in the anesthetized patient has been shown to result in increased levels of circulating catecholamines, improved cardiovascular function, and improved tissue oxygenation compared to maintenance of normocapnia (46–50). Further, maintenance of a moderate degree of hypercarbia causes an increase in body stores of CO_2 that must be eliminated following recovery from anesthesia, resulting in an increase in post-anesthesia ventilation, less likelihood of post-anesthesia hypoventilation, and more rapid emergence from inhalation anesthesia (51–54). Thus, PaCO_2 management may play an important role in determining cardiorespiratory performance during ventilation with AAV and intentional hypercapnia should be considered a fundamental component of any AAV implementation.

Another important attribute of the ventilation strategies utilized in the current study was their static nature. That is, once the predefined ventilation endpoints were reached, and following timepoint T0, additional ventilation parameter adjustment or lung recruitment were not performed. Note, however, that for AAV (but not for CMV) there was the further requirement to maximize C_{RSI} , in addition to meeting both the PaCO_2 and V_{T} goals. This choice may also have contributed to the higher mean P_{aw} observed during AAV compared to CMV. Regardless, in the authors' clinical experience, AAV is not a static mode of ventilation but is a rather dynamic mode wherein parameter adjustment is guided by feedback from both respiratory and cardiovascular monitoring. Thus, while AAV effects patient physiology it is also responsive to patient physiology and the practitioner will find that realized P_{HIGH} , P_{LOW} , T_{HIGH} , T_{LOW} , and mean P_{aw} will vary from one clinical scenario to another with the goal of balancing the beneficial respiratory effects of AAV against any observed cardiovascular impairment.

In a randomly chosen subset of 8 pigs, thoracic CT imaging was performed to assess lung aeration. We found that AAV resulted in larger proportions of hyperaerated and normally aerated lung while CMV resulted in larger proportions of hypoaerated and atelectatic lung. Typically, hyperaerated lung regions have less blood flow, resulting in high V/Q mismatch, the extreme of which is alveolar deadspace. However, alveolar deadspace was significantly lower during AAV than during CMV, indicating maintenance of an appropriate balance between alveolar ventilation and pulmonary blood flow during AAV. During CMV, there was little evidence of hyperaerated lung, yet alveolar dead space was significantly higher than observed during AAV. Even though mean P_{aw} was lower during CMV, it appears that the intermittent increase in P_{aw} during inhalation was sufficient to impede blood flow to normally aerated lung regions creating extreme increase in V/Q and alveolar deadspace. It is widely accepted that $\text{PE}'\text{CO}_2$ rarely is an accurate reflection of PaCO_2 during CMV. Our findings suggest that $\text{PE}'\text{CO}_2$ is a better representative of PaCO_2 during AAV. CT findings also are compatible with our calculation of \dot{Q}_s/\dot{Q}_t which was higher during CMV compared to during AAV.

Although the use of elevated FiO_2 —as defined in this study—during general anesthesia is common in both veterinary

and human practice, we elected to use $F_{IO_2} = 0.21$ in this study because high F_{IO_2} masks the effects of low V/Q lung regions on PaO_2 by largely compensating for their impact on venous admixture. Thus, use of $F_{IO_2} = 0.21$ provided a better test of each mode's ability to counteract the detrimental effects of recumbency and anesthesia on V/Q matching in the lung. Additionally, low F_{IO_2} minimized the conversion of low V/Q regions to shunt via the mechanism of absorption atelectasis. It is significant that even in the absence of supplemental inspired oxygen, PaO_2 was acceptable in all animals regardless of the mode of ventilation. In fact, if a disruption in ventilation or V/Q had occurred, monitoring with a pulse oximeter would have alerted the anesthesiologist of the disruption in pulmonary function more rapidly than if an elevated F_{IO_2} was employed, allowing a rapid increase in F_{IO_2} , while appropriate measures to correct the abnormality are applied. The long-standing dogma that an elevated F_{IO_2} provides a margin of safety is questionable (55–57).

Order effects were observed for some respiratory and cardiovascular variables. For both PaO_2 and SaO_2 , values during AAV were higher when AAV was the first applied mode and lower when it was applied after CMV. These results are supported by the order and mode effects observed for AAV and CMV on \dot{Q}_s/\dot{Q}_t . While \dot{Q}_s/\dot{Q}_t was lower during AAV compared to CMV, it was higher during AAV when CMV was the first applied mode. This indicates that while AAV applied after CMV tended to reduce \dot{Q}_s/\dot{Q}_t and improve oxygenation, as implemented it was unable to completely reverse the larger amounts of \dot{Q}_s/\dot{Q}_t that developed during ventilation with CMV. For cardiovascular variables, a significant order effect was observed for MAP during CMV with values approximately 10 mmHg higher when CMV was applied first compared to when CMV was applied after AAV. This data indicates that AAV continued to impact hemodynamics after its discontinuation and is an interesting observation that would not have been apparent were a cross-over design without washout not been used.

Limitations of this study include the use of total intravenous anesthesia, a laboratory rather than clinical setting, and the absence of a washout period between treatments. Total intravenous anesthesia and inhalational anesthesia may result in differential effects on cardiopulmonary performance which were not assessed in the current study. This is deserving of additional research as inhalational anesthetics are more commonly used in veterinary practice than are total intravenous techniques. While controlled laboratory studies are necessary to establish baseline effects of new ventilatory strategies, it is the impact of such strategies in a diverse clinical population that determines their ultimate utility. Thus, investigations of AAV in such populations, and in other species, are warranted. Although the absence of a washout period did result in some novel observations (see above), the inclusion of a washout period would have likely removed the confounding effect of order of mode application and resulted in a clearer picture of each mode's cardiopulmonary effects. Lastly, it may be argued that the addition of PEEP would improve gas exchange during CMV. CMV with PEEP has been compared to airway pressure release ventilation (APRV; a mode closely related to AAV) in dogs (58). That study found that, compared with CMV+PEEP, APRV resulted in enhanced alveolar ventilation without compromise of circulatory function and tissue oxygen balance.

In conclusion, we have described the cardiopulmonary effects of AAV which is a novel mode of mechanical ventilation in veterinary anesthesia. AAV as implemented in this study resulted in improved indices of pulmonary performance (notably higher C_{RSI} , and lower V_{Dalv}/V_{Talv} and \dot{Q}_s/\dot{Q}_t) compared with CMV in dorsally recumbent anesthetized pigs ventilated with $F_{IO_2} = 0.21$. However, the cardiovascular impact of AAV was greater than CMV with AAV associated with lower MAP, CI, and DO_2I and higher O_2ER compared to CMV. Importantly, based on the established beneficial cardiovascular effects of intentional hypercapnia during anesthesia (46–49), this comparative negative effect of AAV (compared with CMV) on cardiovascular performance may be mitigated by judicious use of intentional hypercapnia during anesthetic management. Further investigation of AAV in anesthetized animals, particularly in clinical settings and with intentional hypercapnia, is warranted.

Data availability statement

The raw data supporting the conclusions of this article will be made available by the authors, without undue reservation.

Ethics statement

The animal study was approved by the University of Missouri, Animal Care and Use Committee and the Department of the Navy, Bureau of Medicine and Surgery. The study was conducted in accordance with the local legislation and institutional requirements.

Author contributions

AB: Conceptualization, Data curation, Funding acquisition, Investigation, Methodology, Project administration, Validation, Writing – original draft, Writing – review & editing. JD: Investigation, Methodology, Writing – original draft, Writing – review & editing. DH: Investigation, Methodology, Writing – original draft, Writing – review & editing. CL-B: Investigation, Methodology, Writing – original draft, Writing – review & editing. RT: Formal analysis, Methodology, Software, Writing – original draft, Writing – review & editing. LF: Formal analysis, Methodology, Writing – original draft, Writing – review & editing. LT: Formal analysis, Writing – original draft, Writing – review & editing. JB: Conceptualization, Data curation, Funding acquisition, Investigation, Methodology, Project administration, Validation, Visualization, Writing – original draft, Writing – review & editing.

Funding

The author(s) declare that financial support was received for the research, authorship, and/or publication of this article. This work was supported by the Office of Naval Research, contract number N68335-16-C-0020 (Anesthesia Ventilator for Atlantic Bottlenose Dolphins and California Sea Lions).

Acknowledgments

The authors thank Kevin and Joni Lunceford of the University of Missouri, Veterinary Health Center for technical assistance with CT image acquisition.

Conflict of interest

JB is owner of Innovative Veterinary Medicine (IVM), which is the manufacturer of the DoIVent™ system. JD was an employee of IVM during performance of this research and is the inventor of both airway pressure release ventilation (APRV; US Patent 4,773,411) and apneustic anesthesia ventilation (AAV; US Patent 6,123,072).

References

- Kavanagh BP, Hedenstierna G. Respiratory physiology and pathophysiology. In: Gropper MA, editor. *Miller's Anesthesia, 9th ed.* Philadelphia, PA: Elsevier (2020). p. 354–83.
- Joyce CJ, Williams AB. Kinetics of absorption atelectasis during anesthesia: a mathematical model. *J Appl Physiol.* (1999) 86:1116–25. doi: 10.1152/jappl.1999.86.4.1116
- Butler JP, Malhotra A, Loring SH. Revisiting atelectasis in lung units with low ventilation/perfusion ratios. *J Appl Physiol.* (2019) 126:782–6. doi: 10.1152/japplphysiol.00354.2018
- Dale WA, Rahn H. Rate of gas absorption during atelectasis. *Am J Physiol.* (1952) 170:606–13. doi: 10.1152/ajplegacy.1952.170.3.606
- Dantzer DR, Wagner PD, West JB. Instability of lung units with low Va/Q ratios during O₂ breathing. *J Appl Physiol.* (1975) 38:886–95. doi: 10.1152/jappl.1975.38.5.886
- Martin-Flores M, Araos JD, Daniels ZS, Newman A, Nugen SA, Campoy L. Effects of intraoperative positive end-expiratory pressure and fraction of inspired oxygen on postoperative oxygenation in dogs undergoing stifle surgery. *Vet Anaesth Analg.* (2022) 49:275–81. doi: 10.1016/j.vaa.2022.02.002
- Martin-Flores M, Cannarozzo CJ, Tseng CT, Lorenzutti AM, Araos JD, Harvey HJ, et al. Postoperative oxygenation in healthy dogs following mechanical ventilation with fractions of inspired oxygen of 04 or >09. *Vet Anaesth Analg.* (2020) 47:295–300.
- Martin-Flores M, Tseng CT, Robillard SD, Abrams BE, Campoy L, Harvey HJ, et al. Effects of two fractions of inspired oxygen during anesthesia on early postanesthesia oxygenation in healthy dogs. *Am J Vet Res.* (2018) 79:147–53. doi: 10.2460/ajvr.79.2.147
- Staffieri F, Franchini D, Carella GL, Montanaro MG, Valentini V, Driessen B, et al. Computed tomographic analysis of the effects of two inspired oxygen concentrations on pulmonary aeration in anesthetized and mechanically ventilated dogs. *Am J Vet Res.* (2007) 68:925–31. doi: 10.2460/ajvr.68.9.925
- Bukoski A, Hodgson D, Downs J, LeBert C, Thombs L, Bailey J. An implementation of apneustic anesthesia ventilation in the horse: comparison with conventional mechanical ventilation. *Vet Anaesth Analg.* (2022) 49:372–81. doi: 10.1016/j.vaa.2022.04.002
- Calero Rodriguez A, de Grauw JC, van Loon J. Effect of different inspired fractions of oxygen on F-shunt and arterial partial pressure of oxygen in isoflurane-anesthetized and mechanically ventilated shetland ponies. *Vet Anaesth Analg.* (2021) 48:930–4. doi: 10.1016/j.vaa.2021.05.005
- Crumley MN, McMurphy RM, Hodgson DS, Kreider SE. Effects of inspired oxygen concentration on ventilation, ventilatory rhythm, and gas exchange in isoflurane-anesthetized horses. *Am J Vet Res.* (2013) 74:183–90. doi: 10.2460/ajvr.74.2.183
- Hubbell JA, Aarnes TK, Bednarski RM, Lerche P, Muir WW. Effect of 50% and maximal inspired oxygen concentrations on respiratory variables in isoflurane-anesthetized horses. *BMC Vet Res.* (2011) 7:23. doi: 10.1186/1746-6148-7-23
- Savvas I, Pavlidou K, Braun C, Schauvliege S, Staffieri F, Moens Y. Evaluation of the effect of the inspired oxygen fraction on blood oxygenation during inhalant anaesthesia in horses: a systematic review with meta-analysis. *Animals.* (2021) 11:2245. doi: 10.3390/ani11082245
- Schauvliege S, Savvas I, Gasthuys F. The effect of the inspired oxygen fraction on arterial blood oxygenation in spontaneously breathing, isoflurane anaesthetized horses: a retrospective study. *Vet Anaesth Analg.* (2015) 42:280–5. doi: 10.1111/vaa.12208
- Uquillas E, Dart CM, Perkins NR, Dart AJ. Effect of reducing inspired oxygen concentration on oxygenation parameters during general anaesthesia in horses in lateral or dorsal recumbency. *Aust Vet J.* (2018) 96:46–53. doi: 10.1111/avj.12662
- Marntell S, Nyman G, Hedenstierna G. High inspired oxygen concentrations increase intrapulmonary shunt in anesthetized horses. *Vet Anaesth Analg.* (2005) 32:338–47. doi: 10.1111/j.1467-2995.2005.00199.x
- Staffieri F, De Monte V, De Marzo C, Grasso S, Crovace A. Effects of two fractions of inspired oxygen on lung aeration and gas exchange in cats under inhalant anaesthesia. *Vet Anaesth Analg.* (2010) 37:483–90. doi: 10.1111/j.1467-2995.2010.00567.x
- Wilding LA, Hampel JA, Khoury BM, Kang S, Machado-Aranda D, Raghavendran K, et al. Benefits of 21% oxygen compared with 100% oxygen for delivery of isoflurane to mice (*Mus musculus*) and rats (*Rattus norvegicus*). *J Am Assoc Lab Anim Sci.* (2017) 56:148–54.
- Brandly JE, Midon M, Douglas HF, Hopster K. Flow-controlled expiration reduces positive end-expiratory pressure requirement in dorsally recumbent, anesthetized horses. *Front Vet Sci.* (2023) 10:1135452. doi: 10.3389/fvets.2023.1135452
- Hopster K, Hurcombe SD, Simpson K, VanderBroek AR, Driessen B. Flow-controlled expiration improves respiratory mechanics, ventilation, and gas exchange in anesthetized horses. *Am J Vet Res.* (2022) 83:393–8. doi: 10.2460/ajvr.21.10.0158
- Hopster K, Rohn K, Ohnesorge B, Kastner SBR. Controlled mechanical ventilation with constant positive end-expiratory pressure and alveolar recruitment manoeuvres during anaesthesia in laterally or dorsally recumbent horses. *Vet Anaesth Analg.* (2017) 44:121–6. doi: 10.1111/vaa.12390
- Ambrosio AM, Ida KK, Souto MT, Oshiro AH, Fantoni DT. Effects of positive end-expiratory pressure titration on gas exchange, respiratory mechanics and hemodynamics in anesthetized horses. *Vet Anaesth Analg.* (2013) 40:564–72. doi: 10.1111/vaa.12068
- Andrade FS, Faco LL, Ida KK, Silva LC, Fantoni DT, Ambrosio AM. Effects of 12 and 17 Cmh(2)O positive end-expiratory pressure applied after alveolar recruitment maneuver on pulmonary gas exchange and compliance in isoflurane-anesthetized horses. *Vet Anaesth Analg.* (2019) 46:64–73. doi: 10.1016/j.vaa.2018.08.003
- Araos J, Sedgwick S, Staffieri F, Donati P, Martin-Flores M. Lung aeration and volumes following alveolar recruitment maneuvers with three airway pressures in healthy anesthetized and mechanically ventilated beagle dogs. *Vet Anaesth Analg.* (2022) 49:443–51. doi: 10.1016/j.vaa.2022.06.005
- Araos JD, Lacitignola L, Stripoli T, Grasso S, Crovace A, Staffieri F. Effects of positive end-expiratory pressure alone or an open-lung approach on recruited lung volumes and respiratory mechanics of mechanically ventilated horses. *Vet Anaesth Analg.* (2019) 46:780–8. doi: 10.1016/j.vaa.2019.04.016
- Canfran S, Gomez de Segura IA, Cediell R, Garcia-Fernandez J. Effects of a stepwise lung recruitment manoeuvre and positive end-expiratory pressure on lung compliance and arterial blood oxygenation in healthy dogs. *Vet J.* (2012) 194:89–93. doi: 10.1016/j.tvjl.2012.02.021
- Di Bella C, Lacitignola L, Grasso S, Centonze P, Greco A, Ostuni R, et al. An alveolar recruitment maneuver followed by positive end-expiratory pressure improves lung function in healthy dogs undergoing laparoscopy. *Vet Anaesth Analg.* (2018) 45:618–29. doi: 10.1016/j.vaa.2018.03.007

The remaining authors declare that the research was conducted in the absence of any commercial or financial relationships that could be construed as a potential conflict of interest.

Publisher's note

All claims expressed in this article are solely those of the authors and do not necessarily represent those of their affiliated organizations, or those of the publisher, the editors and the reviewers. Any product that may be evaluated in this article, or claim that may be made by its manufacturer, is not guaranteed or endorsed by the publisher.

29. Garcia-Sanz V, Aguado D, Gomez de Segura IA, Canfran S. Individualized positive end-expiratory pressure following alveolar recruitment manoeuvres in lung-healthy anaesthetized dogs: a randomized clinical trial on early postoperative arterial oxygenation. *Vet Anaesth Analg.* (2021) 48:841–53. doi: 10.1016/j.vaa.2021.03.019
30. Gomez Fernandez L, Potter J, Hughes JML, Fernandez Perez C, Brama PAJ, Niimura Del Barrio MC. Effects of two alveolar recruitment manoeuvres (sustained inflation and stepwise) followed by positive end-expiratory pressure on cardiac output (measured with lithium dilution), invasive blood pressure and arterial oxygen tension in isoflurane-anaesthetised goats. *Res Vet Sci.* (2022) 150:195–203. doi: 10.1016/j.rvsc.2022.07.004
31. Hopster K, Kastner SB, Rohn K, Ohnesorge B. Intermittent positive pressure ventilation with constant positive end-expiratory pressure and alveolar recruitment manoeuvre during inhalation anaesthesia in horses undergoing surgery for colic, and its influence on the early recovery period. *Vet Anaesth Analg.* (2011) 38:169–77. doi: 10.1111/j.1467-2995.2011.00606.x
32. Staffieri F, Driessen B, Monte VD, Grasso S, Crovace A. Effects of positive end-expiratory pressure on anesthesia-induced atelectasis and gas exchange in anesthetized and mechanically ventilated sheep. *Am J Vet Res.* (2010) 71:867–74. doi: 10.2460/ajvr.71.8.867
33. Wettstein D, Moens Y, Jaegglin-Schmucker N, Bohm SH, Rothen HU, Mosing M, et al. Effects of an alveolar recruitment maneuver on cardiovascular and respiratory parameters during total intravenous anesthesia in ponies. *Am J Vet Res.* (2006) 67:152–9. doi: 10.2460/ajvr.67.1.152
34. Wilson DV, Soma LR. Cardiopulmonary effects of positive end-expiratory pressure in anesthetized, mechanically ventilated ponies. *Am J Vet Res.* (1990) 51:734–9. doi: 10.2460/ajvr.1990.51.05.734
35. Boustead KJ, Grace JF, Buck RK, Zeiler GE. Comparative effects of three different ventilatory treatments on arterial blood gas values and oxygen extraction in healthy anaesthetized dogs. *Vet Anaesth Analg.* (2022) 49:251–64. doi: 10.1016/j.vaa.2021.07.008
36. Mosing M, MacFarlane P, Bardell D, Luthi L, Cripps PJ, Bettschart-Wolfensberger R. Continuous positive airway pressure (cpap) decreases pulmonary shunt in anaesthetized horses. *Vet Anaesth Analg.* (2016) 43:611–22. doi: 10.1111/vaa.12357
37. Mosing M, Rysnik M, Bardell D, Cripps PJ, MacFarlane P. Use of continuous positive airway pressure (Cpap) to optimise oxygenation in anaesthetised horses—a clinical study. *Equine Vet J.* (2013) 45:414–8. doi: 10.1111/evj.12011
38. Bratzke E, Downs J, Smith RA. Intermittent Cpap: a new mode of ventilation during general anesthesia. *Anesthesiology.* (1998) 89:334–40. doi: 10.1097/00000542-199808000-00008
39. Downs JB, Stock MC. Airway pressure release ventilation: a new concept in ventilatory support. *Crit Care Med.* (1987) 15:459–61. doi: 10.1097/00003246-198705000-00001
40. van der Zee P, Gommers D. Recruitment maneuvers and higher peep, the so-called open lung concept, in patients with ards. *Crit Care.* (2019) 23:73. doi: 10.1186/s13054-019-2365-1
41. Faul F, Erdfelder E, Lang AG, Buchner A. G*Power 3: a flexible statistical power analysis program for the social, behavioral, and biomedical sciences. *Behav Res Methods.* (2007) 39:175–91. doi: 10.3758/BF03193146
42. Serianni R, Barash J, Bentley T, Sharma P, Fontana JL, Via D, et al. Porcine-specific hemoglobin saturation measurements. *J Appl Physiol.* (2003) 94:561–6. doi: 10.1152/jappphysiol.00710.2002
43. Willford D, Hill E. Temperature corrections for blood gas values. In: Tumbleson ME, editor. *Swine in Biomedical Research.* New York: Plenum Press (1986). p. 1473–8.
44. Fedorov A, Beichel R, Kalpathy-Cramer J, Finet J, Fillion-Robin JC, Pujol S, et al. 3D Slicer as an image computing platform for the quantitative imaging network. *Magn Reson Imaging.* (2012) 30:1323–41. doi: 10.1016/j.mri.2012.05.001
45. Marini JJ, Ravenscraft SA. Mean airway pressure: physiologic determinants and clinical importance—part 2: clinical implications. *Crit Care Med.* (1992) 20:1604–16. doi: 10.1097/00003246-199211000-00020
46. Khanna AK, McDonell WN, Dyson DH, Taylor PM. Cardiopulmonary effects of hypercapnia during controlled intermittent positive pressure ventilation in the horse. *Can J Vet Res.* (1995) 59:213–21.
47. Low JM, Gin T, Lee TW, Fung K. Effect of respiratory acidosis and alkalosis on plasma catecholamine concentrations in anaesthetized man. *Clin Sci.* (1993) 84:69–72. doi: 10.1042/cs0840069
48. Morgan BC, Crawford EW, Hornbein TF, Martin WE, Guntheroth WG. Hemodynamic effects of changes in arterial carbon dioxide tension during intermittent positive pressure ventilation. *Anesthesiology.* (1967) 28:866–73. doi: 10.1097/00000542-196709000-00021
49. Wagner AE, Bednarski RM, Muir WW 3rd. Hemodynamic effects of carbon dioxide during intermittent positive-pressure ventilation in horses. *Am J Vet Res.* (1990) 51:1922–9. doi: 10.2460/ajvr.1990.51.12.1922
50. Akca O, Doufas AG, Morioka N, Iscoe S, Fisher J, Sessler DI. Hypercapnia improves tissue oxygenation. *Anesthesiology.* (2002) 97:801–6. doi: 10.1097/00000542-200210000-00009
51. Brosnan RJ, Steffey EP, Escobar A. Effects of hypercapnic hyperpnea on recovery from isoflurane or sevoflurane anesthesia in horses. *Vet Anaesth Analg.* (2012) 39:335–44. doi: 10.1111/j.1467-2995.2012.00727.x
52. Gopalakrishnan NA, Sakata DJ, Orr JA, McJames S, Westenskow DR. Hypercapnia shortens emergence time from inhaled anesthesia in pigs. *Anesth Analg.* (2007) 104:815–21. doi: 10.1213/01.ane.0000255199.43961.87
53. Sakata DJ, Gopalakrishnan NA, Orr JA, White JL, Westenskow DR. Rapid recovery from sevoflurane and desflurane with hypercapnia and hyperventilation. *Anesth Analg.* (2007) 105:79–82. doi: 10.1213/01.ane.0000265849.33203.60
54. Sakata DJ, Gopalakrishnan NA, Orr JA, White JL, Westenskow DR. Hypercapnic hyperventilation shortens emergence time from isoflurane anesthesia. *Anesth Analg.* (2007) 104:587–91. doi: 10.1213/01.ane.0000255074.96657.39
55. Downs JB. Has oxygen administration delayed appropriate respiratory care? Fallacies regarding oxygen therapy. *Respir Care.* (2003) 48:611–20.
56. Downs JB, Robinson LA, Steighner ML, Thrush D, Reich RR, Rasanen JO. Open lung ventilation optimizes pulmonary function during lung surgery. *J Surg Res.* (2014) 192:242–9. doi: 10.1016/j.jss.2014.06.029
57. Fu ES, Downs JB, Schweiger JW, Miguel RV, Smith RA. Supplemental oxygen impairs detection of hypoventilation by pulse oximetry. *Chest.* (2004) 126:1552–8. doi: 10.1378/chest.126.5.1552
58. Rasanen J, Downs JB, Stock MC. Cardiovascular effects of conventional positive pressure ventilation and airway pressure release ventilation. *Chest.* (1988) 93:911–5. doi: 10.1378/chest.93.5.911